



iStrings

Aviation Capital

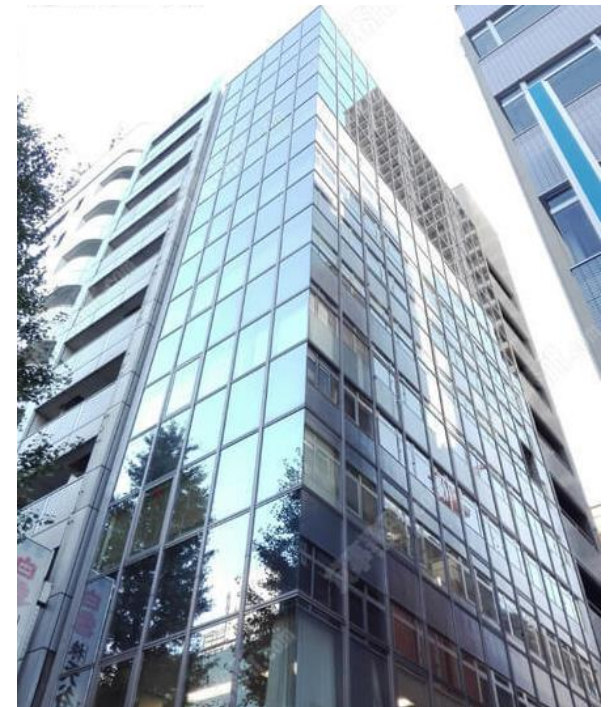
**Marubeni
Group**

1. iStrings Aviation Capital – Company Profile

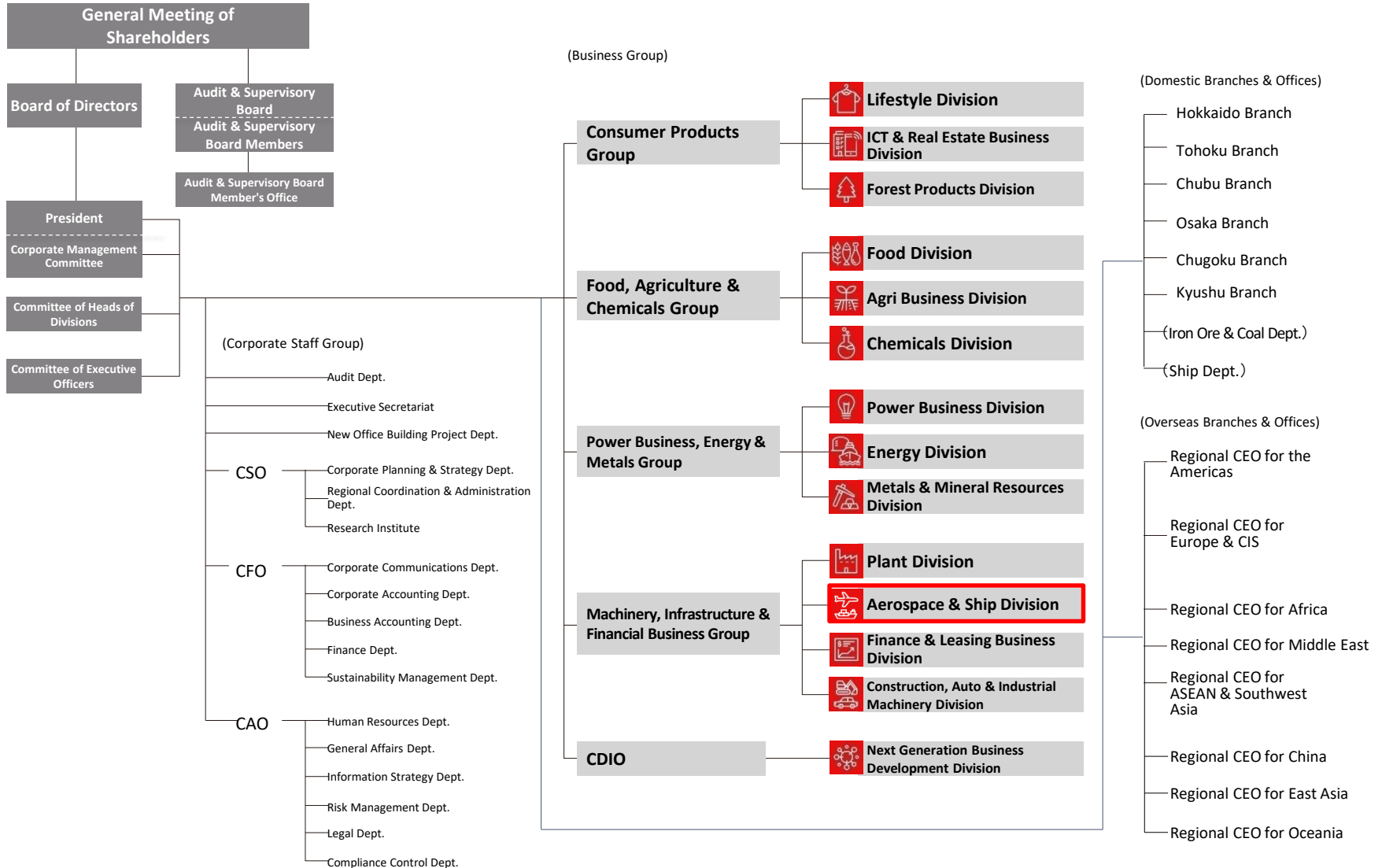
Aviation Investment Management Company, wholly owned subsidiary of Marubeni Corporation

Company Profile

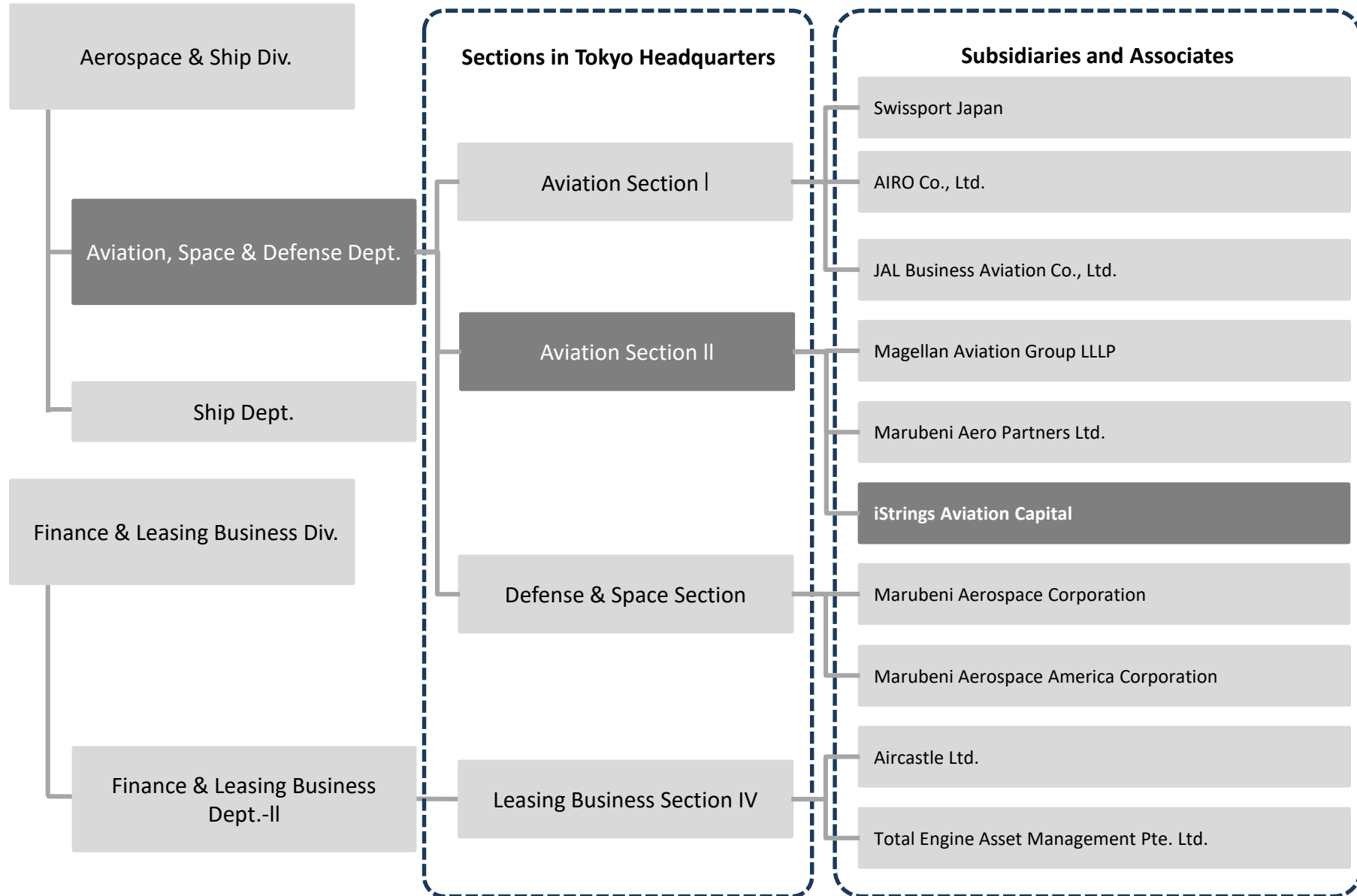
Name	iStrings Aviation Capital Co., Ltd. iStrings Aviation Capital
Established	June 2018
Capital	JPY 100 million (100% owned by Marubeni Corporation)
Location	VORT Nihonbashi I 8F, 2-9-4 Nihonbashi, Chuo-ku, Tokyo 103-0027, Japan
Directors	CEO Saburo Koyama COO Hiroyuki Matsuo
Regulatory License	Director-General of the Kanto Local Finance Bureau (Kinsho), Registration No.3105 (Type II Financial Instruments Business)
Business Activities	Aviation Fund related business Deal Arrangement for JOL



2. Marubeni Group Organization (FY2020)



3. Marubeni Group Organization (FY2020)



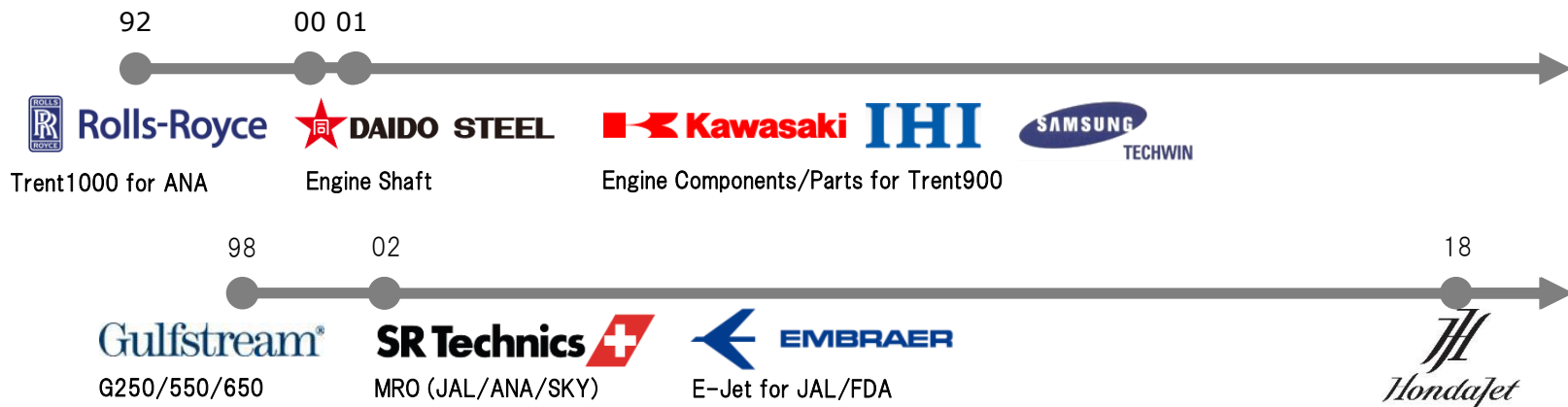
4. Marubeni Group Track Record in Aviation



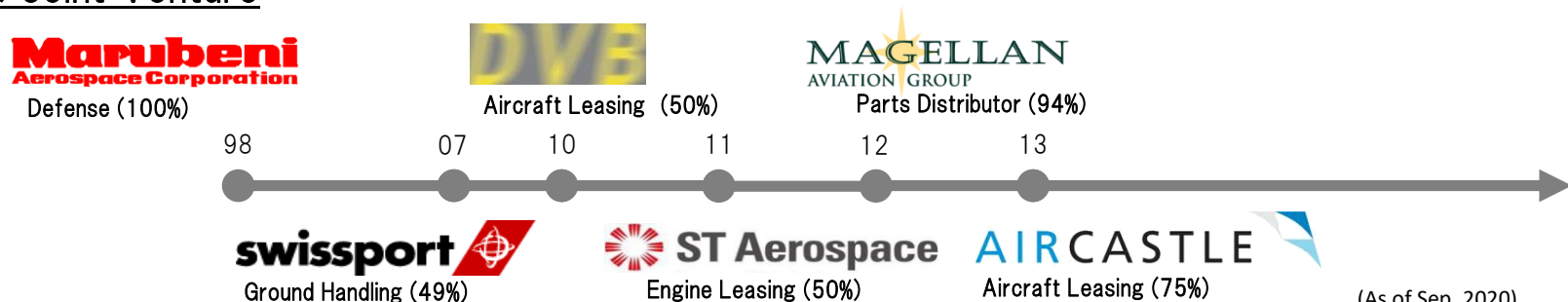
1. Financing / Risk & Revenue Sharing Participation (RRSP)



2. Sales Representative



3. M&A & Joint Venture



5. Marubeni Group Company- Aircraft Leasing

Aircastle Limited

Business : Aircraft Leasing

Founded : November 2005

Location : Stamford(USA) Dublin(Ireland), Singapore

Secondee : 3 persons from Marubeni

- ▶ Marubeni acquired 15.25% stake of Aircastle US\$209 million in July 2013 and increased to 28.8% in 2019
- ▶ Aircastle set up JV with Mizuho Leasing in Feb 2016 (Mizuho Leasing 75% : Aircastle 25%)
- ▶ Marubeni acquired common shares of Aircastle in March 2020 and total ownership ratio of Marubeni is 75% (total of direct and indirect) (Marubeni 75% : Mizuho Leasing 25%)
- ▶ Aircastle got credit rating Baa3-(Moody`s) / BBB-(S&P) / BBB (Fitch) in 2020

AIRCASTLE 

Key Data

- ▶ Number of aircraft
 - 300 (approx. US \$ 7billion)
 - 737, A320, 777, A330, 747F etc.

Future Strategies

- ▶ Expand the portfolio to:
 - US\$8-10 billion



6. Marubeni Group Company- Engine Leasing

Total Engine Asset Management Pte. Ltd. (TEAM)

Business : Engine leasing

Founded : November 2011

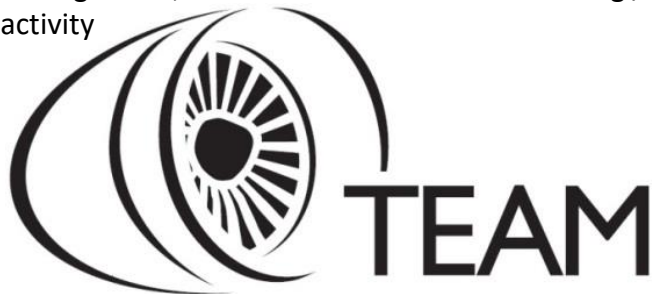
Location : Singapore

Secondee : 4 persons from Marubeni

- ▶ An engine leasing Joint Venture with ST Aerospace Engines (major MRO provider in Singapore)



- ▶ While ST Aerospace takes care of technical / asset management, Marubeni takes care of marketing / finance activity



Total Engine Asset Management Pte. Ltd
(A joint venture company of ST Aerospace and Marubeni)

Key Data

- ▶ Number of engines
 - 35 (CFM56-7B/5B, V2500, GE90, LEAP)
- ▶ Target
 - CFM56-7B/5B, V2500, Leap-1A, GE90, Genx-1B, Trent XWB

Future Strategies

- ▶ Expand the portfolio to:
 - 50 engines in coming 3 years



7. Marubeni Group Company – Parts Trading

Magellan Aviation Group LLLP

Business : Parts Trading

Founded : 2000

Location : Charlotte, Florida (USA), Shannon(Ireland)
Singapore, etc.

Secondee : 4 persons from Marubeni

- ▶ Magellan engages in the purchase, leasing, disassembly, sales and distribution of aircraft, engines and spare parts.
- ▶ Marubeni acquired 50% equity ownership of Magellan in June 2012 and increased to 94% in 2020.

Target - Aircraft

- ▶ Narrow Body - 737NG, A320
- ▶ Wide Body - 777, A330
- ▶ Regional Jet - E170/190, CRJ
- ▶ Turbo Prop - ATR72/42, Dash8

Target - Engine

- ▶ Narrow Body - CFM56, V2500
- ▶ Wide Body - PW4000, CF6-80
- ▶ Regional Jet - CF34-8/10
- ▶ Turbo Prop - PW100series



8. Marubeni Group Company – Ground Handling

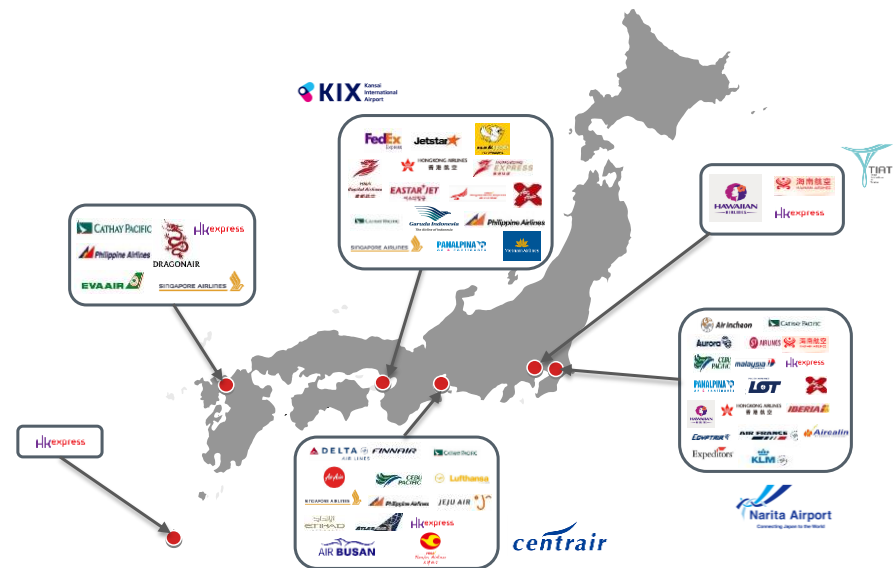
Swissport Japan Ltd.

Business	: Ground Handling
Founded	: 2007
Location	: Japan
Secondee	: 3 persons from Marubeni
Shareholder	: Swissport International Ltd. 51% Marubeni Corporation 49%



Key Data

- ▶ Employee
 - Approx. 1100 persons
- ▶ Operation base (Airport)
 - NRT, KIX, NGO, FUK, HND, OKA



9. Contact List

iStrings
Aviation Capital

Saburo Koyama
Chief Executive Officer

iStrings Aviation Capital
VORT Nihonbashi 1 Building 8F,
9-4, Nihonbashi 2-chome,
Chuo-ku, Tokyo 103-0027, Japan
TEL : +81-3-3282-7333 FAX : +81-3-3272-1136
E-mail : koyama-saburo@marubeni.com

Marubeni
Group

iStrings
Aviation Capital

Hiroyuki (Hiro) Matsuo
Chief Operating Officer

iStrings Aviation Capital
VORT Nihonbashi 1 Building 8F,
9-4, Nihonbashi 2-chome,
Chuo-ku, Tokyo 103-0027, Japan
TEL : +81-3-3282-7538 FAX : +81-3-3272-1136
E-mail : Matsuo-H@istrings.co.jp

Marubeni
Group

iStrings
Aviation Capital

Norihide (Nori) Iwamura
Senior Vice President

iStrings Aviation Capital
VORT Nihonbashi 1 Building 8F,
9-4, Nihonbashi 2-chome,
Chuo-ku, Tokyo 103-0027, Japan
TEL : +81-3-3282-3078 FAX : +81-3-3272-1136
E-mail : N-Iwamura@istrings.co.jp

Marubeni
Group

iStrings
Aviation Capital

Takuya Juro
Senior Manager

iStrings Aviation Capital
VORT Nihonbashi 1 Building 8F,
9-4, Nihonbashi 2-chome,
Chuo-ku, Tokyo 103-0027, Japan
TEL : +81-3-3282-3344 FAX : +81-3-3272-1136
E-mail : JURO-T@jpn.istrings.co.jp

Marubeni
Group