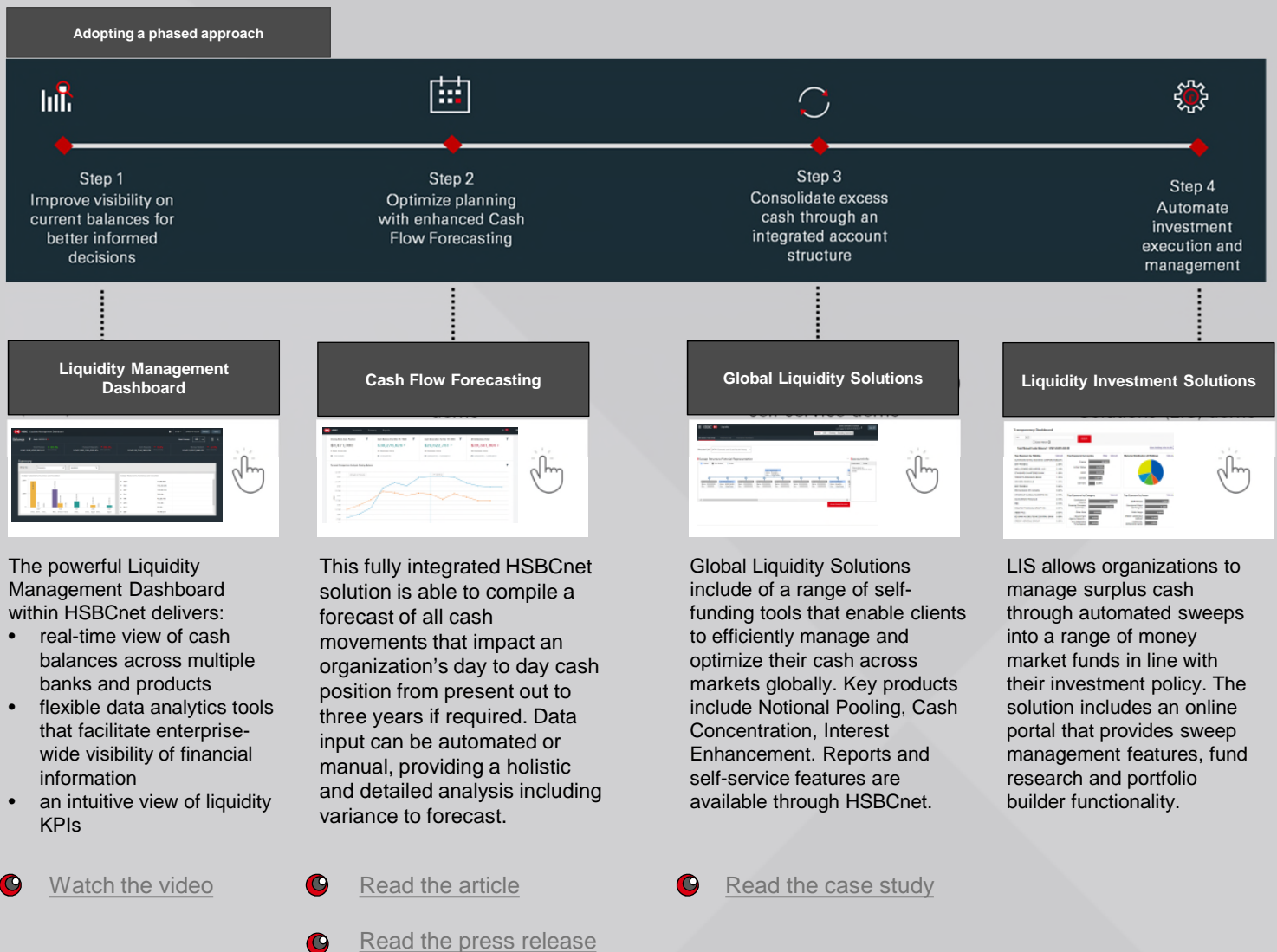


End to End Liquidity Management

In the current Covid-19 pandemic, multinational treasury teams have to come to grips with their firms' overall liquidity position, and establish the ability to access the liquidity they need, when they need it.

Transitioning to digital channels is key to enable treasury teams to have the right data and insights for accurate planning and decision-making. Having a robust cash flow forecasting process is critical to navigate the crisis. Automating cash consolidation and investment, coupled with real time reporting and self-service, facilitate the deployment of cash and funds mobility.

HSBC's suite of liquidity management tool can help you enhance reporting on cash positions, optimize your cash flow forecasts, consolidate excess cash, and automate investment execution with full visibility and control through HSBCnet.

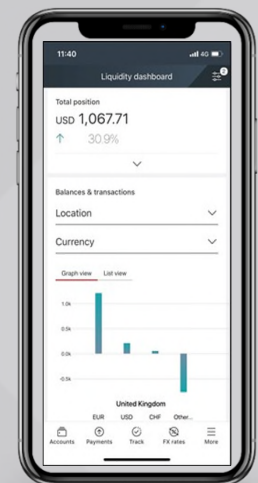
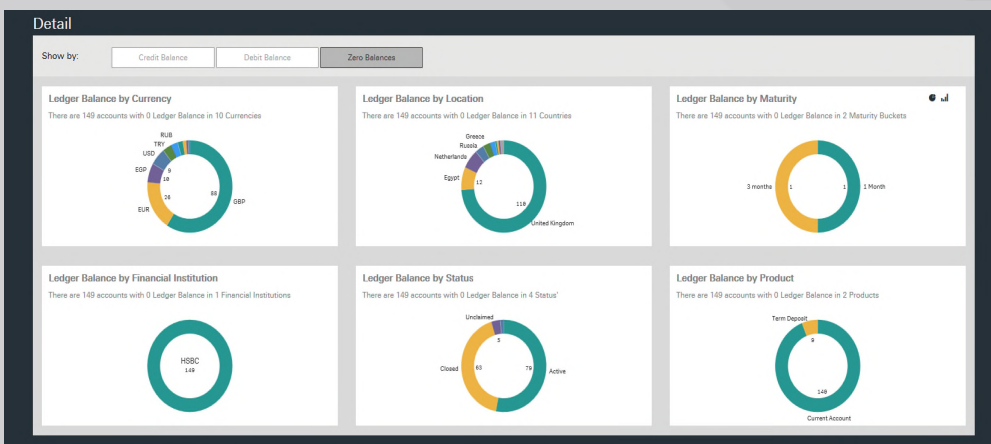
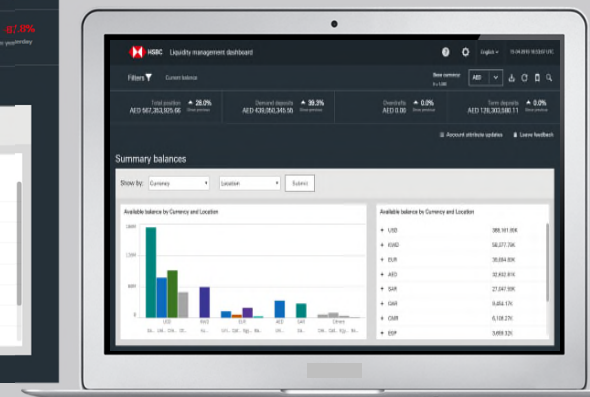
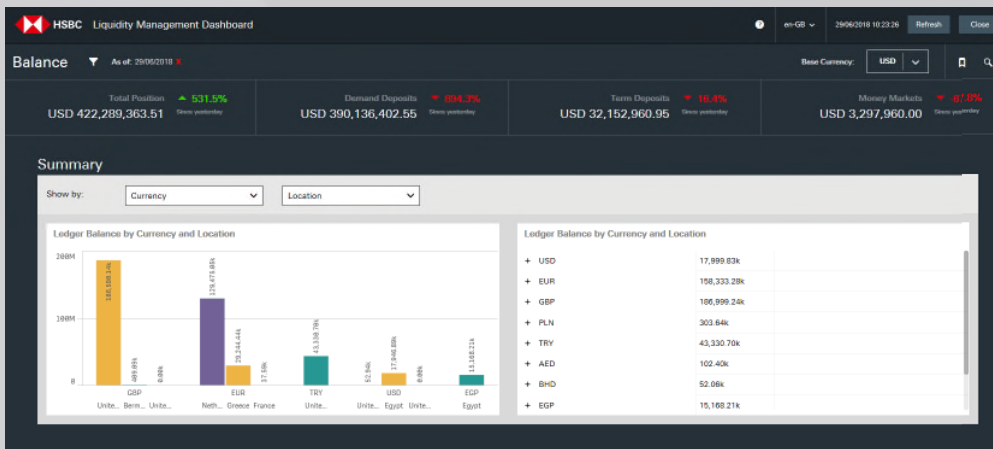


To learn more, contact your HSBC relationship team.

Liquidity Management Dashboard

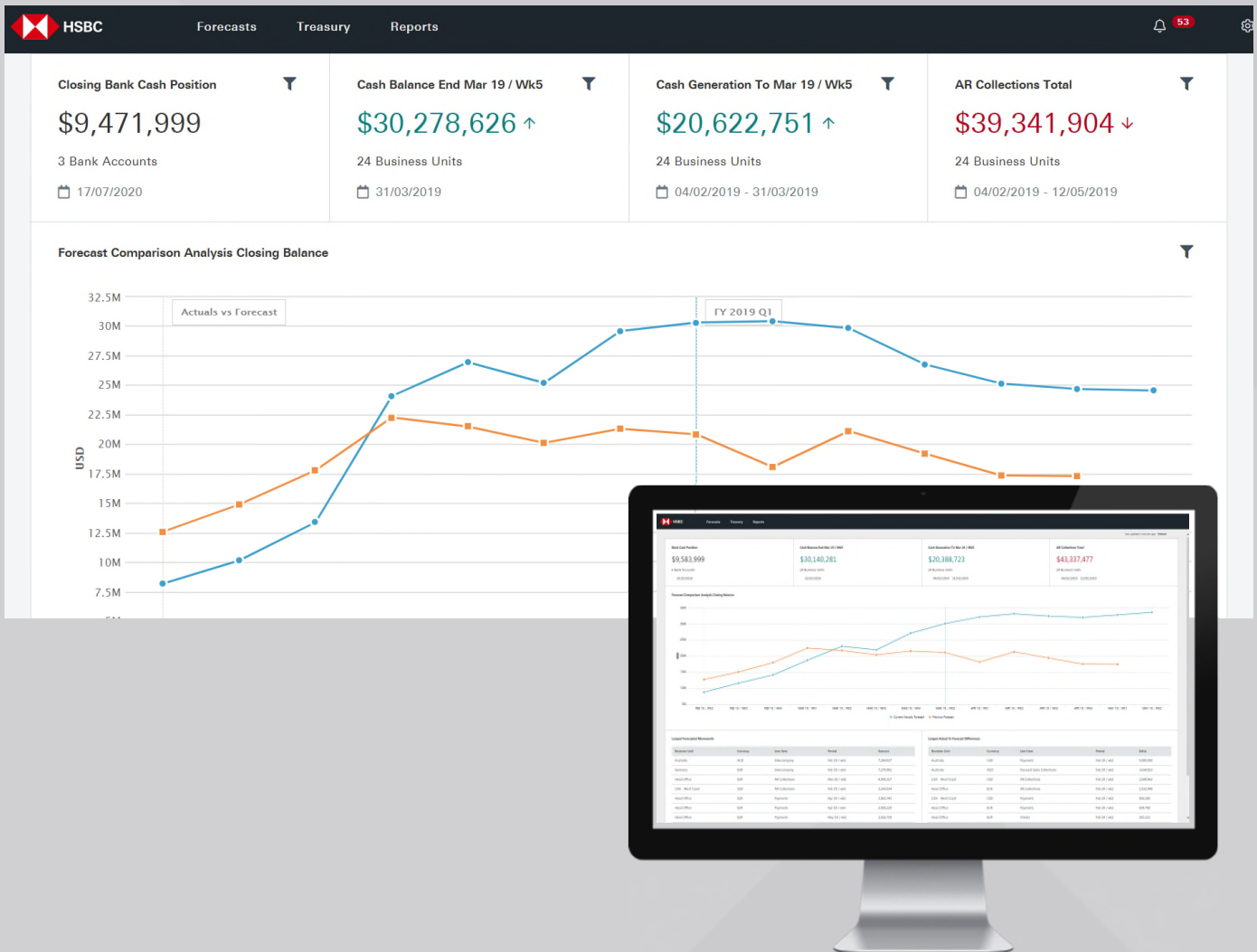
The powerful Liquidity Management Dashboard within HSBCnet delivers:

- real-time view of cash balances across multiple banks and products
- flexible data analytics tools that facilitate enterprise-wide visibility of financial information
- an intuitive view of liquidity KPIs



Cash Flow Forecasting

This fully integrated HSBCnet solution is able to compile a forecast of all cash movements that impact an organization's day to day cash position from present out to three years if required. Data input can be automated or manual, providing a holistic and detailed analysis including variance to forecast.



Global Liquidity Solutions

Global Liquidity Solutions include of a range of self-funding tools that enable clients to efficiently manage and optimize their cash across markets globally. Key products include Notional Pooling, Cash Concentration, Interest Enhancement. Reports and self-service features are available through HSBCnet.

The screenshot displays the HSBC Liquidity management interface. At the top, the HSBC logo and 'Liquidity' title are on the left, and user information 'DEMOCORPORATE MAKER' and 'Last Logged in: 2020-07-16 08:41:27' are on the right. A 'Log off' button is also present. Below the header, there are navigation tabs: 'Sweep', 'ICS', 'Pooling', and 'Pending Activities'. The main content area shows 'Structure Tree View' selected, with 'Structure List' and 'Execution Summary' as alternatives. A dropdown menu for 'Structure List' is set to '24741 Domestic and Cross Border Sweep'. The main visualization is titled 'Sweep Structure Pictorial Representation' and includes a legend for 'Entitled', 'Non Entitled', and 'Active' statuses. It shows a hierarchical tree structure starting with a root node 'USD-1099000002...' (Name: Hong kon..., Cou...: Hong Kong). This root node branches into eight child nodes. The second node from the left is 'USD-808481550274' (Name: HSBC_MASK, Cou...: Hong Kong). The eighth node from the left is 'USD-XXXX854864...' (Name: Hong Ko..., Cou...: Hong Kong). Other nodes have redacted information. To the right of the tree is an 'Account Info' panel with a table header 'Particulars Value' and a message: 'Please select an account/instruction to view details'. At the bottom right of the interface is a red button labeled 'Amend Sweep Structure'.

Liquidity Investment Solutions (LIS)

LIS allows organizations to manage surplus cash through automated sweeps into a range of money market funds in line with their investment policy. The solution includes an online portal that provides sweep management features, fund research and portfolio builder functionality.

The image displays several screenshots of the HSBCnet LIS portal interface:

- Top Screenshot (Dashboard):** Shows the 'HSBCnet' logo, navigation tabs (Portfolio, Research, Reports), and a 'Dashboard' section with 'Exposure Profile' and 'Total USD Portfolio: 54,697,334.00'. It includes a 'Top Exposure by Country' bar chart and a world map.
- Middle Left Screenshot (Transparency Dashboard):** Features a search bar and a 'Total Mutual Funds Balance: USD 54,697,334.00'. It displays 'Top Exposure by Holding', 'Top Exposure by Country', 'Maturity Distribution of Holdings' (pie chart), 'Top Exposure by Category', and 'Top Exposure by Issuer'.
- Middle Right Screenshot (Fund Analysis):** Shows 'Fund Analysis' with a line chart for 'AIM 2019' and '1st 2019 Yield'. It includes a table for 'All Funds (18)' with columns for Fund Name, Balance, and various performance metrics.
- Bottom Left Screenshot (Fund Comparison):** Displays a 'Fund Comparison' line chart comparing 'Goldman Sachs FS MMF Inst' (NAV 1.0005) and 'HSBC USD Liquidity Fund Cl F' (NAV 1.0000) from 18/04/2019 to 18/10/2019.



Important information

© Copyright HSBC Bank USA, N.A. 2020. ALL RIGHTS RESERVED. No part of this document may be reproduced, stored, distributed or transmitted in any form without the prior written permission of HSBC Bank USA, N.A.

This document is issued by HSBC Bank USA, N.A.(HSBC) and is intended for reference and illustrative purposes only. It does not constitute an offer or advice for you to purchase from or otherwise enter into a transaction with HSBC or any of its subsidiaries or affiliates.

Deposit products are offered in the United States by HSBC Bank USA, N.A. Member FDIC.

All United States persons, including entities, are subject to U.S. taxation on their worldwide income and may be subject to tax and other filing obligations with respect to their U.S. accounts. U.S. persons and entities should consult with a tax advisor for more information.

Investments are not a Bank deposit or obligation of the Bank or any of its affiliates, are not FDIC insured, are not insured by any federal government agency, are not guaranteed by the Bank or any of its affiliates, may lose value.

All decisions regarding the tax implications of your investment(s) should be made in connection with your independent tax advisor.

